

PERSONAL NAVIGATOR

THURSDAY, APRIL 19, 2012

Sunrise: 7:12 a.m. Sunset: 7:43 p.m.
Evening Attire: Semi-Formal

Thursday: Partly Cloudy High: 81°F/27°C

Friday: Partly Cloudy High: 75°F/24°C

DAY AT SEA

Disney's Believe

Genie from Aladdin and many of Disney's most beloved magic makers take a father on a magical journey to show him that anything is possible if you just believe.

WALT DISNEY THEATRE
DECKS 3 & 4 FORWARD
3:00, 6:15 P.M. & 8:30 P.M.

Assistance available at the entrance to the Walt Disney Theatre 30 minutes prior to show time.

Disney Fantasy Fun Facts

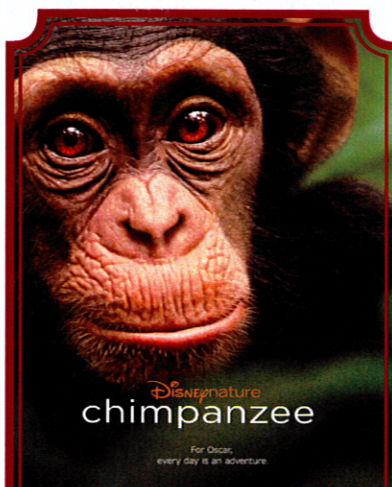
While the cute baby elephant, Dumbo serves as a fantastic stern character, in real life he would have to gather 24,266 other adult male African elephants to match the weight of the Disney Fantasy.

Almost 4 football fields in length, the Disney Fantasy is longer than the height of the Eiffel Tower in Paris (1,063 feet). She is also longer than the height of New York City's famous Chrysler building (1,047 feet).

The two huge mosaic walls based on the Disney Pixar animated feature "Finding Nemo" are showcased in Cabanas casual-dining restaurant on Deck 11. Created for the Disney Fantasy by Italian artists, each wall is more than 25 feet wide and more than 8 feet high and contains approximately 194,500 tiles in 200 colors of hand-crafted Venetian enamel. A team of nine artists created the mosaics based on Pixar designs depicting the underwater world of Australia's Great Barrier Reef and characters featured in the motion picture.

Debarb Talk Broadcast

Your Cruise Director, Brent, presents important information including details regarding U.S. Customs and Border Protection procedures. Tune into Channel 5 of your stateroom TV.



Movie PremEAR,
Walt Disney Theatre,
12:00 Midnight.
(G) 1 hr 18 mins.
Doors open at 11:30 p.m.

Don't Miss:

Art of the Theme Show Tour

9:30 a.m. & 2:30 p.m., Meet at Meridian (18+), Deck 12, Aft
Join us on a guided ship tour and discover the key ingredients that make the Disney Fantasy cruise ship one-of-a-kind.

Anyone Can Cook

2:30 p.m., D Lounge (18+), Deck 4, Midship
From our galley to yours; join our chefs as they show you how to prepare delicious dishes. Today's menu is Lobster Ravioli.

Final Jackpot Bingo

3:45 p.m., Buena Vista Theatre, Decks 4 & 5, Forward
The snowball jackpot MUST BE WON at this final session. Who will be the lucky winner? An estimated \$9,000 in prize money to be won. First game starts at 4:15 p.m.!

Talent Show Rehearsals

5:00 p.m., D Lounge, Deck 4, Midship
A rehearsal time for those registered for our show tomorrow. There is still time to sign-up, pop by the Guest Services Desk by 4:00 p.m. today.

Shutters

Family Portraits!

Visit our various studio locations on Deck 3, Midship, to have your Family Portraits taken. Photos will be available for viewing on our interactive kiosks in Shutters Digital and the printed copy will be available to view in your photo folder in Shutters, Deck 4, Midship.

DINNER MENU

Animator's Palate: Captain's Gala
Enchanted Garden: Captain's Gala
Royal Court: Captain's Gala

DRINK OF THE DAY

High Tide (Alcoholic)
Passion Cream Freeze
(Non Alcoholic)

IMPORTANT NUMBERS

Fire/Security: 7-3001
Medical Emergency: 7-3000
Health Center: 7-1923

FAMILY ACTIVITY HIGHLIGHTS



WAKE UP WITH DISNEY JUNIOR

D Lounge, Deck 4, Midship - 9:30 a.m.

What happens when you experience unlimited fun with your favorite Disney Junior shows? An exciting dance party designed especially for pre-schoolers ages seven and under.

MICKEY 200

The Tube, Deck 4, Aft - 10:00 a.m. (Limited Availability)

Don't eat your vegetables... race them in this wild and wacky charge to the finish line. May the best veggie win!



JACK-JACK'S INCREDIBLE DIAPER DASH

Lobby Atrium, Deck 3, Midship - 10:00 a.m.

Calling all baby cruisers! The Disney Fantasy's babies take to the mat to see who's the fastest crawler of the seven seas!

CAPTAIN'S SIGNING

Whitecaps, Deck 3, Forward - 12:00 p.m.

Stop by Whitecaps to meet the Master of the Disney Fantasy, Captain Marco, and have your cruise mementos signed.

DISNEY ANIMATION: ILLUSION OF LIFE - STAGING A SCENE

D Lounge, Deck 4, Midship - 12:15 p.m.

Go behind the scenes at Walt Disney Animation Studios and learn how basic poses, silhouette, and placement (long shot, medium shot, close-up) enhance animation storytelling. Then, participate in a drawing exercise where you make the choices to communicate a story in this fun and fascinating enrichment program.

TOWEL FOLDING

The Tube, Deck 4, Aft - 2:00 p.m.

Watch how your stateroom hosts create some of those famous towel creatures.

DISNEY TUNE TRIVIA

La Piazza, Deck 4, Aft - 2:30 p.m.

Join your Cruise Staff and pianist Charlie Reuter, as they put your Disney Tune knowledge to the test.

FAMILY DANCE PARTY WITH "THE DREAMERS"

D Lounge, Deck 4, Midship - 7:30 p.m.

"The Dreamers" play live in D Lounge for your listening and dancing pleasure. With special appearances from some of the world famous Disney Characters.

THE QUEST

The Tube, Deck 4, Aft - 7:30 p.m.

Enjoy the wildest and wackiest scavenger team event on the seven seas!



ADULT ACTIVITY HIGHLIGHTS

FITNESS CLASSES & SEMINARS

Sunrise Stretch - Senses Fitness Center, 7:00 a.m.

Fab Abs - Senses Fitness Center, 7:30 a.m.

Body Sculpt Boot Camp (Fee Applies) - Senses Fitness Center, 9:00 a.m.

Fitness Frenzy (13-17 yrs) (Fee Applies) - Senses Fitness Center, 10:00 a.m.

Seminar: Pain Management - Outlook, 10:15 a.m.

Seminar: Detox for Health and Weight Loss - Outlook, 11:00 a.m.

Seminar: Secrets to a Flatter Stomach - Outlook, 2:00 p.m.

Group Cycling - Senses Fitness Center, 4:00 p.m.



TASTING SEMINARS

Mixology (21+) - Meridian, 3:00 p.m.

Martini Tasting (21+) - Skyline, 4:00 p.m.

Tequila & Margarita Tasting (21+) - The Tube, 5:00 p.m.

Please make reservations for tastings at Guest Services for a nominal fee.

2000'S MUSIC TRIVIA

O'Gills Pub, Deck 4, Aft, 11:30 a.m.



DIVE INTO DJ'ING

The Tube, Deck 4, Aft, 3:30 p.m.

MIXER EVENT

O'Gills Pub, Deck 4, Aft, 10:00 p.m.



ESPN DREAM TEAM DRAFT DAY - FOOTBALL

O'Gills Pub, Deck 4, Aft - 1:00 p.m.

Join the "Commissioner" and engage in this interactive fantasy Football draft unlike anything you've ever seen! Can YOU draft the greatest team of All-Time?

LIVE MUSIC WITH CHARLIE REUTER

La Piazza, Deck 4, Aft - 7:30, 9:45 & 10:45 p.m.

Charlie Reuter plays a special tribute to the greatest songs of Elton John, Billy Joel & Harry Connick Jr at 10:45 p.m.



VIVA EUROPA

The Tube, Deck 4, Europa - 10:00 p.m.

Join us as we give you an entertaining taste of Europe. From Italy, France, to Ireland and London and best of all you won't even have to leave the ship!

\$10,000 JACKPOT BINGO

D Lounge, Deck 4, Midship

Card Sales - 10:45 a.m. Game Starts - 11:00 a.m.

It's big, it's massive, it's supersized. It's \$10,000 MEGA jackpot bingo! Take home \$10,000 if you can cover your card in 46 numbers or less. If not, we carry on to play for the biggest cash prize of the session.

FINAL JACKPOT BINGO

**Buena Vista Theatre,
Decks 4 & 5, Forward**

Card Sales - 3:45 p.m.

Game Starts - 4:15 p.m.

The snowball jackpot **MUST BE WON** at this final session. Who will be the lucky winner? An estimated \$9,000 in prize money to be won.

First game starts at 4:15 p.m.!



YOUTH ACTIVITIES HIGHLIGHTS

DINE & PLAY

A convenience for families dining at 8:15 p.m., our Youth Activities Counselors will be available at 9:15 p.m. at the entrance of Royal Court, Enchanted Garden and Animator's Palate dining rooms to bring registered children to join the fun in the Youth Activity areas.



Deck 5 Midship (7-1440) 9:00 a.m. - 12:00 Mid.

BIG TOP FUN FEST

10:45 a.m.

It's the greatest show on Earth. Come re-discover the circus Disney style with clowns, jugglers and classic Disney cartoons.

ONCE UPON A TIME

6:30 p.m.

Join Beverly the Bookmaker for a magical, musical story time featuring a Disney Princess!



Deck 5 Midship (7-1445) 9:00 a.m. - 12:00 Mid.

GET THE HOOK

3:00 p.m.

A villainous villain has stolen Captain Hook's prized golden hook. Become a member of the Top Detective Agency and help solve the clue's to retrieve Hook's hook.

STITCH'S ADVENTURE SQUAD

7:30 p.m.

Stitch, everyone's favorite alien, is making an appearance to share some of his mischievous games and activities.



Deck 13 Midship (41-14426) 10:00 a.m. - 1:00 a.m.

ESPN DREAM TEAM DRAFT DAY - BASKETBALL

9:30 p.m.

Join the "Commissioner" and engage in this interactive fantasy Basketball draft unlike anything you've ever seen! Can YOU draft the greatest team of All-Time?

DISNEY ANIMATION: ILLUSION OF LIFE - CARTOON PHYSICS

4:00 p.m.

Go behind the scenes at Walt Disney Animation Studios and see how flat drawings and pencil lines can come to life through basic techniques such as Stretch and Squash, and create your own "bouncing ball" animation exercise in this entertaining and fun enrichment program.



Entrance on Deck 4 Forward (7-9418)
10:00 a.m. - 2:00 a.m.

DIVE INTO DJ'ING

1:30 p.m.

Hop on the turn tables and learn to scratch with Guest DJ Cide.

DREAM NOW, SEA HOW!

4:00 p.m.

Imagine a job where your days are spent dreaming up plots, characters, designs or mechanics that only come from one place... In this VIP Experience you will meet one of the creative minds with Disney. They will ignite your imagination and answer your questions.

BUENA VISTA THEATRE

Today's Movies



10:00 a.m.
Run Time: 1 hr 56 mins
Rating: G



12:30 p.m.
Run Time: 1 hr 43 mins
Rating: PG



5:45 & 8:15 p.m.
Run Time: 1 hr 40 mins
Rating: PG



10:30 p.m.
Run Time: 2 hrs 26 mins
Rating: PG-13



Tune IN and rock with us at this new family dance party! Spread the word, there will be cool music, new dances, contests and a chance to win great prizes!

D Lounge,
Deck 4, Midship,
10:15 p.m.



ADULT CABARET


Featuring the Comedy & Mystery of Guy Bavli as he entertains you in this adult Cabaret-Style show.

The Tube (18+),
Deck 4, Aft
10:15 p.m.


YOUTH ACTIVITIES OPEN HOUSE

Open House is an opportunity for all to come and participate in a variety of exciting activities and free time in the Oceaneer Club, Lab and Vibe throughout the cruise. During these times secured programming will still be offered in the other venue for those looking to check their children into care.


MORE TO ENJOY WHILE ONBOARD



The puppies from 101 Dalmatians have gone missing! Use your special detective "badge" to track down the puppies and catch the villain who took them.



Decks 2 & 5, Midship
9:00 a.m. - 9:00 p.m.



SENSES SPA & SALON
SPA TOPIA SPECIAL


Full body exfoliation. Hotstone back massage on the back neck and shoulders, booster facial and foot and ankle massage

75 mins. \$135
4:00 p.m. to 9:00 p.m. ONLY

SILENT ART AUCTION

Your opportunity to leave the ship with one of your own art pieces. The auction will include original line art and inkings of Disney characters.

Preview
10:00 a.m. - 12:00 p.m.
Auction
1:00 - 4:00 p.m.




Shutters

GET THE PICTURE

Amazing offer! Order all your stateroom photos on a CD for only \$349.95 and for \$50 more you can take home the printed copy as well! All your stateroom photos in digital as well as printed format for only \$399.95!

**Please note that photos are available for viewing on our interactive photo kiosks approximately five hours after being taken and are only available for purchase during this cruise.*



SAVE TIME TOMORROW, BOOK YOUR NEXT CRUISE TODAY
Avoid the last minute rush. Book your next cruise today for the best availability and pricing. You'll save 10%, receive up to a \$200 onboard credit, and pay a reduced deposit! Tune to Channel 8 for details, visit the Future Cruise Sales Desk, Deck 4 Midship, or call 7-2848.



DISNEY VACATION CLUB® GROUP PRESENTATION
Want to learn more about taking magical vacations year after year? Please see a Disney Vacation Club representative on Deck 4, Midship, or call 7-2805 from your stateroom phone for more information about our interactive group presentation.

SURF @ SEA
\$0.75 per minute, or save money by buying blocks of time. \$55.00 for 100 minutes, \$100.00 for 250 minutes and \$150.00 for 500 minutes. Wireless information sheets are available at Guest Services, Deck 3, Midship.
Please note: Due to satellite connectivity, onboard internet service will be noticeably slower than you may be accustomed to and may at times be interrupted or unavailable.

Disney Cruise Line

PORT ADVENTURES

Disney's private island Castaway Cay not only offers a terrific family beach day, but many other excursions and rentals to compliment. Snorkeling, bike and float rentals, parasailing plus much more, means that there is something for everyone at Disney's Castaway Cay. To make your reservation, visit the Port Adventures Desk, Deck 5, Midship.

SHOPPING

SOPHIA FIORI DIAMOND
Want to be unique and individual? Stop by Whitecaps to meet "Diamond Jeff" and try on the world's most memorable white diamond pieces and commemorate your cruise. Ask the hosts about 50% savings off US retail. Whitecaps, Deck 3, Forward.

DOONEY & BOURKE
Dooney & Bourke is celebrated for the exceptional quality and crafting of its equestrian-inspired handbags and accessories. Now designing exclusively for Disney and Disney Cruise Line. Available in Whitecaps, Deck 3, Midship.

BIBBIDI BOBBIDI BOUTIQUE
Your princess's smile lasts a lifetime. The Bibbidi Bobbidi Boutique gives your princess Pixie Dust and courage. Fairy Godmother has selected her best trainees to make fairy tale wishes a reality. The Bibbidi Bobbidi Boutique is located on Deck 5, Midship, across from the Port Adventures Desk. Call ext.9438 or stop by the Boutique to make a reservation.

FANTASY AND INAUGURAL SAILING
Check out the amazing array of products from baseball caps, pins to t-shirts available in Sea Treasures, Mickey's Mainsail and Whitecaps, Deck 3, Forward.

WHOZITS AND WHATZITS
It's your next door shop while enjoying the sun and the pool. Come and visit us for all your AquaDuck souvenirs, swim wear and accessories!
Deck 11, Midship, available from 10:00 a.m. to 4:00 p.m.

QUACKS
It's the place to go for this day at sea! Check out our outdoor station with these new and great value t-shirts, and make them part of your souvenirs for this cruise!
Available from 10:00 a.m. to 4:00 p.m. on the main pool area on Deck 11, Aft.

Due to port regulations, when the ship is docked, the stores will remain closed.

IMPORTANT INFORMATION

Security Notice
All Guests (including children) who wish to disembark the ship are required to present their Key to the World card at the gangway. A photo ID is also required for those Guests who are 18 years of age or older. Guests under the age of 18 are required to have a Parent, Guardian or other responsible adult sign an authorization form at the time it is given out if they wish to go ashore unaccompanied. Authorization forms are available at the gangways and Guest Services.

Please Note:
Please remember to use plenty of sunscreen and mosquito repellent when venturing ashore.

Cold and Flu Reminder
Please wash hands frequently and thoroughly, particularly before meals. Contact the Health Center by dialing 7-1923, should anyone in your party become ill.

Corridor Quiet Hours
As a courtesy to all our Guests, please recognize quiet hallway hours from 10:00 p.m. til 8:00 a.m.

Inclement Weather
For the safety of all Guests, outdoor events may be changed due to unforeseen weather conditions.

Environmental Message
With Disney's commitment to the Environment, please refrain from throwing anything over the Ship's side. Thank you!

No Reserved Seats Policy
As a courtesy to all our Guests, we kindly advise that the saving of seats is not permitted in the Walt Disney Theatre, and the saving of the sun loungers is not permitted on Deck 11, 12, and 13. Items left unattended will be returned to lost and found at Guest Services, Deck 3 Midship.

Smoking
For the comfort of our guests the following areas are designated as Smoking areas: - Promenade Deck (Deck 4), smoking is permitted Port Side, Aft only from 6:00 p.m. to 6:00 a.m.
- Currents - Deck 13, Forward, Port Side.
- Meridian Bar - Deck 12, Aft, Port Side, outside.
- Smoking is permitted on stateroom verandahs. Smoking is prohibited inside all guest staterooms. Guests found smoking in their staterooms will be charged a \$250 stateroom recovery fee.

Walt Disney Theatre
Theatrical performances may use artificial fog, strobe lights, pyrotechnics and other special effects. For the safety of our performers and the comfort of those around you, the use of any photography, video recording device or any electronic equipment is prohibited.

Verandah Safety
Please do not leave any combustible materials on your balcony when not present in your stateroom for safety reasons.
DF/BD/7W/002/4.14.12/RD/©DISNEY

	8:30	8:45	9:00	9:15	9:30	9:45	10:00	10:15	10:30	10:45	11:00	11:15	11:30	11:45	12:00	12:15	12:30	12:45	1:00	1:15	1:30
FUNNELVISION	101 Dalmations (G) FunnelVision					The Lion King (G) FunnelVision					The Princess & the Frog (G) FunnelVision										
MOVIES	Cars 2 (G) Buena Vista Theatre										The Muppets (PG) Buena Vista Theatre >2:13 p.m.										
CHARACTER	Snow White Dk 4, Midship			Phineas & Ferb Lobby Atrium		Aladdin Dk 4, Midship		Mickey Lobby Atrium		Phineas & Ferb Lobby Atrium		Aladdin Dk 4, Midship		Character Dance Party Lobby Atrium							
FUN FOR ALL AGES	Wake Up with Disney Jr. D Lounge			Walt Disney Theatre		Bingo Pre Sales		\$10,000 Jackpot D Lounge		Captain's Signing Whitecaps			Disney Animation: Staging a Scene D Lounge			Family Crafts: Tote Bags D Lounge					
	Foosball Tournament Goofy's Sports Deck			Mickey 200 (Limited Availability) The Tube					Disney Vacation Club Presentation The Tube												
ADULTS	Friends of Bill W. Outlook		Closest to the Pin Golf Simulator			Seminar: Pain Management Outlook			Detox for Health & Weight Loss Outlook			ESPN Dream Team Draft Day O'Gills Pub									
ADULTS	Boot Camp (Fee Applies) Senses Fitness Center		Art of the Theme Show Tour Meet at Meridian					Club 18*21 2000's Music Trivia O'Gills Pub			Champagne Tasting (21+) Ooh La La (Fee Applies)										
Vibe	Gotcha										Zombified					DJ Class					
Edge	Hangin' in Edge										Partner Playoff					Boys & Girls Chill					
Oceaneer Lab	Super Sloppy Science - Volcanoes										Disney Animation- Creating a Character					Cook					
Oceaneer Club	Open House					Big Top Fun Fest					Youth Lunch					Create A Postcard					
Out & About	Magic Playfloor					Fitness Frenzy Senses Fitness Center (Fee Applies)															

	1:45	2:00	2:15	2:30	2:45	3:00	3:15	3:30	3:45	4:00	4:15	4:30	4:45	5:00	5:15	5:30	5:45	6:00	6:15	6:30	6:45
FUNNELVISION	Wall-E (G) FunnelVision					Toy Story (G) FunnelVision															
MOVIES	Tangled (PG) Buena Vista Theatre >7:25 p.m.																				
CHARACTER	Princess Gathering Lobby Atrium		Minnie Preludes		Ariel Preludes		Donald Lobby Atrium		Minnie Lobby Atrium		Mickey Lobby Atrium										
FUN FOR ALL AGES	Fun in the Sun with "The Dreamers" Deck 12, Forward		Walt Disney Theatre		Bingo Pre Sales		FINAL Jackpot Buena Vista Theatre		Talent Show Rehearsals D Lounge		Live Music with Fine Whines Lobby Atrium		Walt Disney Theatre								
	Towel Folding The Tube		Disney Tune Trivia La Piazza		Shuffleboard Deck 4, Port Side																
ADULTS	Secrets to a Flatter Stomach Outlook		Anyone Can Cook D Lounge - Lobster Ravioli		Mixology (21+) Meridian (Fee Applies)		Martini Tasting (21+) Skyline (Fee Applies)		Tequila & Margarita Tasting (21+) The Tube (Fee Applies)												
ADULTS	80's Music Challenge O'Gills Pub		Art of the Theme Show Tour Meet at Meridian		18*21 Dive into DJ'ing The Tube > 4:30 p.m.		Group Cycling Senses Fitness Center														
Vibe	Dive into DJ'ing		Mind Boggles		Dream Now, Sea How!				Partner Playoff												
Edge	Anyone Can Cook				Open House				Ultimate Scavenger Hunt												
Oceaneer Lab	Get The Hook		Disney Animation: Creating a Character		Youth Dinner				Marshmallow Olympics												
Oceaneer Club	Create a Postcard		Magic Playfloor		Puzzle Playtime				Once Upon a Time												
Out & About	Capture the Flag - Meet at Sports Deck, Deck 13																				

	7:00	7:15	7:30	7:45	8:00	8:15	8:30	8:45	9:00	9:15	9:30	9:45	10:00	10:15	10:30	10:45	11:00	11:15	11:30	11:45	12:00
FUNNELVISION	Chicken Little (G) FunnelVision					The Game Plan (PG) FunnelVision															
MOVIES	Tangled (PG) Buena Vista Theatre >12:56 a.m.										The Help (PG-13) Buena Vista Theatre										
CHARACTER	Belle Dk 4, Midship		Daisy Preludes		Mickey Lobby Atrium		Ariel Dk 4, Midship		Goofy Preludes		Minnie Lobby Atrium		Chip & Dale Dk 4, Midship		Mickey Lobby Atrium						
FUN FOR ALL AGES	The Quest The Tube		Walt Disney Theatre		Family Karaoke D Lounge		Live Music with Fine Whines Lobby Atrium		Walt Disney Theatre < Starts at 12:00 Midnight		Family Superstar Karaoke D Lounge		Walt Disney Theatre								
	Family Dance Party with "The Dreamers" D Lounge		Live Music with Fine Whines Lobby Atrium		Live Music with Fine Whines Lobby Atrium																
ADULTS	Live Piano with Charlie Reuter La Piazza		Viva Europa Europa		Guy Bavi The Tube		Viva Europa with Guest DJ Cide The Tube														
ADULTS	Club 18*21 Mixer O'Gills Pub		50 More Movie Quotes Trivia O'Gills Pub		Live Guitar with Rob Thompson O'Gills Pub																
Vibe	Just Dance				Pump it Up! >Till' 11:00 p.m.				Magic Show				<12:15am Dance Party								
Edge	Gender Wars				ESPN Dream Team Draft Day				Pajamarama Movie Night >1:00am												
Oceaneer Lab	Stitch's Adventure Squad				Create Your Own Postcard				Open Mike Night				Hangin' in the Lab								
Oceaneer Club	Memory Wall				Camp Rocking Out				Movie Time				Magic Playfloor								
Out & About	Table Tennis Tournament																				

Symbol for activities that will be repeated during the cruise

FOLD

Fold along the dotted lines and take me with you so you don't miss any of the fun!

OUT & ABOUT SERIES

FOLD

IN THE SPOTLIGHT SERIES

CREATE & INVENT SERIES

JUMP UP! SERIES

CLUBHOUSE SERIES

STORYBOOK SERIES

THURSDAY, APRIL 19, 2012 - DAY AT SEA

IMPORTANT NUMBERS

Fire/Security: 7-3001
 Medical Emergency: 7-3000
 Health Center: 7-1923

BUENA VISTA THEATRE



10:00 a.m.
 Run Time: 1 hr 56 mins
 Rating: G



12:30 p.m.
 Run Time: 1 hr 43 mins
 Rating: PG



5:45 & 8:15 p.m.
 Run Time: 1 hr 40 mins
 Rating: PG



10:30 p.m.
 Run Time: 2 hrs 26 mins
 Rating: PG-13

DINNER MENU
 Animator's Palate: Captain's Gala
 Enchanted Garden: Captain's Gala
 Royal Court: Captain's Gala
 Dining Times: 5:45pm & 8:15pm

Evening Attire: Semi-Formal

DRINK OF THE DAY
 High Tide (Alcoholic)
 Passion Cream Freeze (Non-Alcoholic)

Thursday: Partly Cloudy
 High: 81°F/27°C
 Friday: Partly Cloudy
 High: 75°F/24°C

DINING & LOUNGES

BRACEFAST

CABANAS CONTINENTAL	DECK 11, AFT	7:00 A.M. - 7:30 A.M.
CABANAS	DECK 11, AFT	7:30 A.M. - 10:45 A.M.
ENCHANTED GARDEN	DECK 2, MID	9:00 A.M. - 10:45 A.M.
ROYAL COURT	DECK 3, MID	8:00 A.M. - 9:30 A.M.

LUNCHEON

CABANAS	DECK 11, AFT	12:00 P.M. - 2:15 P.M.
ENCHANTED GARDEN	DECK 2, MID	12:00 P.M. - 1:30 P.M.
FILLMORE'S FAVORITES	DECK 11, MID	11:00 A.M. - 6:00 P.M.
LUIGI'S PIZZA	DECK 11, MID	11:00 A.M. - 6:00 P.M.
ROYAL COURT	DECK 3, MID	12:00 P.M. - 1:30 P.M.
TOW MATE'S GRILL	DECK 11, MID	11:00 A.M. - 11:00 P.M.

DINNER

ANIMATOR'S PALATE	DECK 3, AFT	5:45 P.M. & 8:15 P.M.
ENCHANTED GARDEN	DECK 2, MID	5:45 P.M. & 8:15 P.M.
ROYAL COURT	DECK 3, MID	5:45 P.M. & 8:15 P.M.
CABANAS TABLE SERVICE	DECK 11, AFT	6:30 P.M. - 8:30 P.M.

LATE NIGHT SNACKS

LA PIAZZA (18+)	DECK 11, AFT	10:45 P.M. - 11:45 P.M.
LUIGI'S PIZZA	DECK 11, MID	9:30 P.M. - 12:30 A.M.

ADDED FEATURES

BEVERAGE STATION	DECK 11, MID	24 HOURS
EYE SCREAM	DECK 11, MID	11:00 A.M. - 11:00 P.M.
ROOM SERVICE	DIAL O	24 HOURS

ENTERTAINMENT - LOUNGES - BARS

Adults must be 21 and older to consume alcoholic beverages.

BON VOYAGE	DECK 3, MID	10:00 A.M. - 11:00 P.M.
COVE BAR (18+)	DECK 11, FWD	9:30 A.M. - 10:30 P.M.
COVE CAFE (18+)	DECK 11, FWD	7:00 A.M. - 12:00 MID.
CURRENTS (18+)	DECK 13, FWD	10:00 A.M. - 11:00 P.M.
D LOUNGE	DECK 4, MID	SHOW TIMES
FROZONE	DECK 11, MID	11:00 A.M. - 11:00 P.M.
LA PIAZZA	DECK 4, AFT	12:30 P.M. - 12:00 MID.
MERIDIAN (18+)	DECK 12, AFT	5:00 P.M. - 12:00 MID.
O'GILLS PUB	DECK 4, AFT	1:00 P.M. - 12:00 MID.
O'OH LA LA (18+)	DECK 4, AFT	5:00 P.M. - 12:00 MID.
OUTLOOK	DECK 14, MID	
SKYLINE (18+)	DECK 4, AFT	4:30 P.M. - 12:00 MID.
THE TUBE (18+)	DECK 4, AFT	10:00 P.M. - 2:00 A.M.
VISTA CAFE	DECK 4, MID	7:30 A.M. - 10:00 P.M.
WAVES	DECK 12, AFT	10:00 A.M. - 6:00 P.M.

Consumers who order raw or partially cooked, ready-to-eat food of animal origin, are hereby informed that the food is not sufficiently cooked to ensure its safety.

SHIP DIRECTORY

YOUTH ACTIVITIES

DISNEY'S OCEANEER CLUB	DECK 5, MID	9:00 A.M. - 12:00 MID.
DISNEY'S OCEANEER LAB	DECK 5, MID	9:00 A.M. - 12:00 MID.
EDGE	DECK 13, MID	10:00 A.M. - 1:00 A.M.
VIBE	DECK 4, FWD	10:00 A.M. - 2:00 A.M.
IT'S A SMALL WORLD NURSERY	DECK 5, MID	9:00 A.M. - 11:00 P.M.

RECREATION

AQUADUCK	DECK 12, MID	9:00 A.M. - 10:00 P.M.
AQUALAB	DECK 12, AFT	9:00 A.M. - 7:00 P.M.
DONALD'S POOL	DECK 11, MID	6:00 A.M. - 11:00 P.M.
GOLF SPORTS SIMULATORS	DECK 13, AFT	9:00 A.M. - 6:00 P.M.
GOOFY GOLF	DECK 13, AFT	8:00 A.M. - 10:00 P.M.
GOOFY'S SPORTS DECK	DECK 12, AFT	8:00 A.M. - 6:00 P.M.
MICKEY'S POOL	DECK 11, MID	6:00 A.M. - 11:00 P.M.
MICKEY'S SLIDE	DECK 11, MID	9:00 A.M. - 6:00 P.M.
MIDSHIP DETECTIVE AGENCY	DECKS 2 & 5, MID	9:00 A.M. - 9:00 P.M.
NEMO'S REEF	DECK 11, MID	9:00 A.M. - 7:00 P.M.
PORT ADVENTURES DESK	DECK 5, MID	10:00 A.M. - 12:00 P.M. 2:00 P.M. - 5:00 P.M. 7:00 P.M. - 8:30 P.M.
QUIET COVE POOL	DECK 11, FWD	6:00 A.M. - 12:00 MID
SMELVILLE FALLS	DECK 13, FWD	6:00 A.M. - 6:30 P.M.
SENSES FITNESS CENTER	DECK 11, FWD	6:30 A.M. - 10:00 P.M.

GENERAL INFORMATION

AIR-CADE	DECK 11, AFT	24 HOURS
DISNEY VACATION CLUB DESK	DECK 4, MID	9:00 A.M. - 11:30 A.M. 2:30 P.M. - 10:00 P.M.
FUTURE CRUISE SALES DESK	DECK 4, MID	9:00 A.M. - 1:00 P.M. 3:00 P.M. - 6:00 P.M. 7:30 P.M. - 8:30 P.M. 9:30 P.M. - 10:30 P.M.
GUEST SERVICES	DECK 3, MID	24 HOURS
MEDICAL HEALTH CENTER	DECK 1, FWD	9:30 A.M. - 11:00 A.M. 4:30 P.M. - 7:00 P.M.
PORT & SHOPPING DESK	DECK 3, MID	7:30 P.M. - 8:30 P.M.
PRELUDES	DECK 3, FWD	5:45 P.M. - 6:30 P.M. 8:00 P.M. - 8:45 P.M.
SENSES SPA AND SALON	DECK 11, FWD	8:00 A.M. - 10:00 P.M.
SHUTTERS PHOTO GALLERY	DECK 4, MID	10:00 A.M. - 11:00 P.M.
SHUTTERS DIGITAL	DECK 4, MID	24 HOURS
SHOPPING		
BIBBIDI BOBBIDI BOUTIQUE	DECK 5, MID	9:00 A.M. - 9:00 P.M.
MICKEY'S MAINSAIL	DECK 3, FWD	9:00 A.M. - 11:00 P.M.
QUACKS	DECK 11, MID	10:00 A.M. - 4:00 P.M.
SEA TREASURES	DECK 3, FWD	9:00 A.M. - 11:00 P.M.
VISTA GALLERY	DECK 4, MID	10:00 A.M. - 10:00 P.M.
WHITECAPS	DECK 3, FWD	9:00 A.M. - 11:00 P.M.
WHOZITS & WHATZITS	DECK 11, MID	10:00 A.M. - 12:00 P.M. 1:00 P.M. - 4:00 P.M.

Character Appearances

SNOW WHITE & DOPEY

Deck 4, Midship Balcony - 9:30 a.m.
 Deck 4, Midship Balcony - 10:30 a.m.

PHINEAS & FERB

Lobby Atrium - 9:45 a.m.
 Lobby Atrium - 10:45 a.m.

MICKEY MOUSE

Lobby Atrium - 9:30 a.m.
 Lobby Atrium - 10:30 a.m.
 Lobby Atrium - 5:45 p.m.
 Lobby Atrium - 7:45 p.m.
 Lobby Atrium - 10:15 p.m.

ALADDIN & GENIE

Deck 4, Midship Balcony - 10:00 a.m.
 Deck 4, Midship Balcony - 11:00 a.m.

GOOFY & MAX

Lobby Atrium - 10:00 a.m.
 Lobby Atrium - 11:00 s.m.

PRINCESS GATHERING

Lobby Atrium - 1:45 p.m.

MINNIE MOUSE

Preludes - 2:30 p.m.
 Lobby Atrium - 5:15 p.m.
 Lobby Atrium - 7:15 p.m.
 Lobby Atrium - 9:45 p.m.

CHIP & DALE

Deck 4, Midship Balcony - 5:15 p.m.
 Preludes - 8:00 p.m.
 Deck 4, Midship Balcony - 10:00 p.m.

ARIEL

Preludes - 4:00 p.m.
 Deck 4, Midship Balcony - 8:00 p.m.

DAISY DUCK

Deck 4, Midship Balcony - 4:45 p.m.
 Preludes - 7:30 p.m.

DONALD DUCK

Lobby Atrium - 4:45 p.m.

GOOFY

Deck 4, Midship Balcony - 5:45 p.m.
 Preludes - 9:30 p.m.

PLUTO

Preludes - 5:45 p.m.

BELLE

Deck 4, Midship Balcony - 7:00 p.m.

CINDERELLA

Deck 4, Midship Balcony - 7:30 p.m.

GOOFY'S SPORTS

Digital Simulators

Sports Simulator (Basketball, Baseball, Hockey, or Soccer) \$25 / half hr, \$45 / hr
Golf Simulator \$12 / half hr, \$20 / hr



Reservations can be made at the Port Adventures Desk, Deck 5, Midship or at the Simulators, Deck 13, Aft

DF/BD/W/002/4 18 12/BD/C/DSNEY

For details of daily Disney character appearances, refer to the character line on Navigator Grid, or the digital character board in the Lobby Atrium.